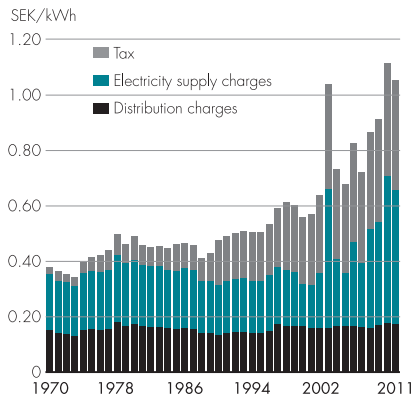


Breakdown of total electricity price for a single-family home with electrical heating and a variable rate contract, 1990 prices, in January of each year



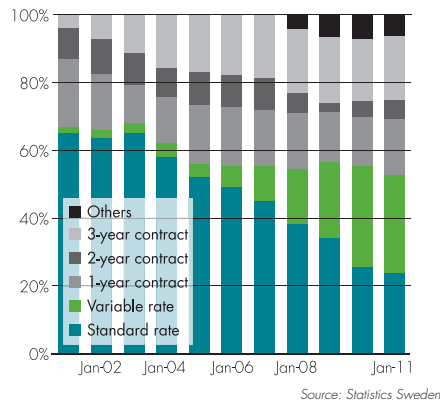
Sources: Swedish Energy Agency and Statistics Sweden



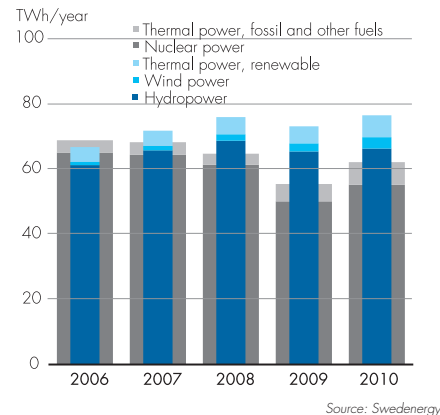
Svensk Energi – Swedenergy – AB
 SE-101 53 Stockholm, Sweden
 Visiting address: Olof Palmes Gata 31
 Phone: +46 8 677 25 00
 Fax: +46 8 677 25 06
 Website: www.svenskenergi.se

© Svensk Energi – Swedenergy – AB
 Printing: Planograf, Sept 2011
 Order: directly via our website

Customer mobility, January 2001–2011



Development of renewable electricity generation 2006–2010

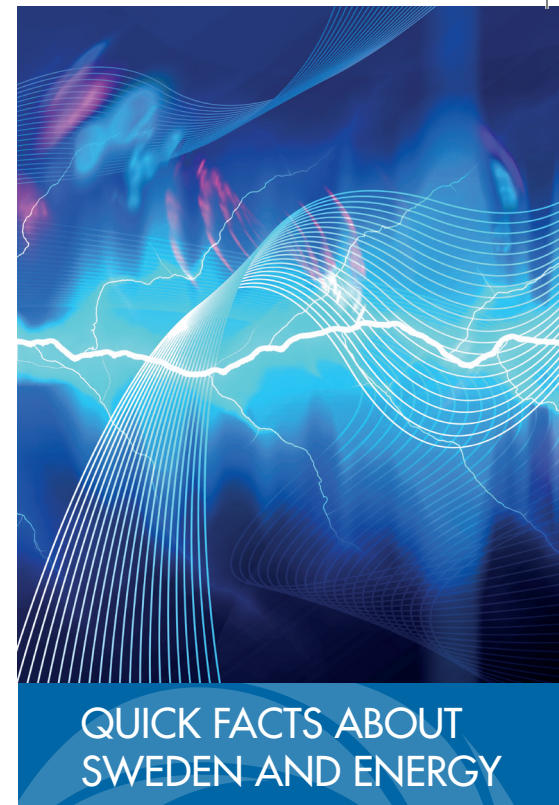


Gross electricity consumption. Source: IEA

Country	Consumption per capita, kWh		Total consumption, TWh 2010
	2009	2010	
Iceland.....	51,600	52,600 ↗	16.5
Norway.....	25,000	27,300 ↗	120.1
Luxembourg.....	15,300	19,000 ↗	568.4
Canada.....	17,800	17,500 ↘	7.2
Finland.....	15,300	16,300 ↗	81.0
Sweden.....	15,000	15,200 ↗	138.8
USA.....	13,100	13,500 ↗	4 020.2
Australia.....	11,500	10,900 ↘	235.0
New Zealand.....	9,800	9,800	41.0
South Korea.....	9,100	9,700 ↗	441.7
Switzerland.....	8,400	8,600 ↗	64.6
Belgium.....	8,100	8,400 ↗	86.2
France.....	7,900	8,200 ↗	494.4
Japan.....	7,400	8,000 ↗	65.1
Austria.....	7,800	7,400 ↘	951.3
Germany.....	6,700	7,000 ↗	113.4
Netherlands.....	6,900	6,900	552.6
Denmark.....	6,400	6,500 ↗	35.3
Czech Republic.....	6,000	6,200 ↗	27.3
Ireland.....	6,200	6,100 ↘	378.9
Spain.....	5,800	5,900 ↗	62.3
Italy.....	5,500	5,800 ↗	268.1
UK.....	6,200	5,700 ↘	326.0
Greece.....	5,300	4,800 ↘	59.1
Poland.....	3,600	3,600	137.2

Units of measurement

1 kilowatt (kW).....	= 1,000 Watts (W)
1 megawatt (MW).....	= 1,000 kW
1 gigawatt (GW).....	= 1,000 000 kW
1 megawatt hour (MWh).....	= 1,000 kilowatt hours (kWh)
1 gigawatt hour (GWh).....	= 1,000,000 kWh
1 terawatt hour (TWh).....	= 1,000,000,000 kWh



QUICK FACTS ABOUT SWEDEN AND ENERGY

2011 edition



Published by Swedenergy

All data refers to 1 January 2011 or the full year 2010.

Sweden's surface according to Statistics Sweden 449,964 km ²			
cultivated land and grassland.....	10%		
forests.....	50%		
mountains.....	25%		
lakes.....	10%		
cities.....	5%		
Maximum length.....	1,574 km		
Maximum width.....	499 km		
Population 31 Dec. 2010 according to Statistics Sweden 9,415,570			
Per square km of land surface	21		
Gainfully employed population	4,459,000		
National income, SEK M, according to Statistics Sweden			
	2009	2010	
Gross domestic product.....	3,089,181	3,301,072	
Gross investment.....	503,124	607,709	
Household consumption.....	1,526,678	1,600,836	
Public consumption.....	857,935	898,762	
Foreign trade, SEK M, according to Statistics Sweden			
	2009	2010	
Export of goods and services.....	1,495,225	1,648,816	
Import of goods and services.....	1,293,781	1,455,071	

Energy consumption by sector according to Statistics Sweden (TWh)				
	2008	2009	2010*	
Industrial	152	134	152	36%
Public transport	103	102	104	25%
Residential, service, etc.	142	151	166	39%
Total	397	387	422	100%

*Preliminary data from Swedenergy

Breakdown of electricity usage by sector (TWh) according to Statistics Sweden				
	2008	2009	2010*	
Industrial	56.6	50.7	53.5	36%
Service	36.3	35.9	38.5	26%
Residential	40.6	41.6	44.1	30%
Transmission losses	10.5	10.2	11.0	7%
Total	144.0	138.4	147.1	100%

*Preliminary data from Swedenergy

Electrical energy balance (net TWh). Sources: Statistics Sweden and Swedenergy				
	2008	2009	2010*	
Domestic production	146.0	133.7	145.0	100%
Renewable	81.4	78.4	82.5	56.9%
Hydropower	68.6	65.3	66.2	
Wind power	2.0	2.5	3.5	
Thermal power	11.0	10.6	12.8	8.8%
CHP, district heating	5.3	5.2	6.7	
CHP, industry	5.3	5.2	5.8	
Condensing power	0.4	0.2	0.3	
Nuclear power	61.3	50.0	55.6	38.3%
Other thermal power (fossil and other fuels)	3.2	5.3	6.9	4.8%
CHP, district heating	1.9	4.1	5.8	
CHP, industry	0.9	0.7	0.6	
Condensing power	0.4	0.5	0.5	
Gas turbine, diesel, etc.	0.02	0.02	0.03	
Domestic usage	144.0	138.4	147.1	
Transmission losses	10.5	10.2	11.0	
Electricity from neighbouring countries	15.6	16.4	17.6	
Electricity to neighbouring countries (-)	-17.6	-11.7	-15.6	
Net exchange with neighbouring countries**	-2.0	4.7	2.1	

*Preliminary data from Swedenergy. ** Negative values represent exports.

Peak load 22 Dec (17-18), MW		26,700
Installed capacity at 31 Dec. 2010 (MW electricity)		
Hydropower.....		16,200
Wind power.....		2,163
Nuclear power.....		9,151
Other thermal power.....		8,187
Total		35,701
Maximum transmission capacity of international connections (MW)		
from neighbouring countries.....	8,930	
to neighbouring countries.....	8,830	
Ownership of electricity generation, share of installed capacity		
State (Vattenfall AB, Svenska Kraftnät).....		40%
Non-Swedish owners.....		40%
Municipalities.....		12%
Others.....		8%

Electricity networks in Sweden

The local networks are normally divided into low voltage (400/230V) and high voltage networks (typically 10–20 kV). The total line length of Sweden's low voltage networks is over 302,500 km, of which 76,500 km consist of overhead lines and 226,000 km of underground cable. The local high voltage networks, also frequently referred to as medium voltage networks, are made up of 97,000 km of overhead lines and 93,500 km of underground cable. Some 5.2 million electricity users are connected to the low voltage networks and 6,500 to the high voltage networks. The regional grids are mainly owned by three DSOs and have a combined line length of around 33,000 km. The Swedish national grid is owned and operated by the public utility Svenska Kraftnät, and is made up primarily of 400 kV and 220 kV lines with a total length of around 15,000 km. In total, the Swedish electricity grid contains 541,000 km of power lines, including 319,500 km of underground cable. If the Swedish grid were stretched out in one long line, it would extend more than thirteen times around the earth.

Largest member companies in Swedenergy

Member company (corporate group)	Power generation capacity, MW	Low voltage customers	Regional grids, km
Vattenfall AB	13,552	912,446	16,934
E.ON Sverige AB	6,552	1,004,054	8,256
Fortum Power and Heat AB	5,819	841,751	5,800
Starkraft Sverige AB	1,262		
Göteborg Energi AB	312	280,245	182
Skellefteå Kraft AB	838	63,545	1,002
Mälaren Energi AB	569	100,272	65
Tekniska Verken i Linköping AB	263	88,793	66
Jämskraft AB	268	59,572	588
Öresundskraft AB	128	94,113	115
Umeå Energi AB	243	56,230	236
Jönköping Energi AB	43	52,922	119
Lunds Energikoncern AB (publ.)	30	64,983	11
Gävle Energi AB	39	45,939	31
Telge Nät AB		49,211	
Eskestuna Energi & Miljö AB	39	45,248	3
Holmen Kraft AB	253		
Karlstads Energi AB	107	33,244	14
Sundsvall Energi AB	74	27,977	

Largest hydropower stations, net capacity (MW)

Harsprånget (Lule älv).....	830
Stornorrors (Ume älv).....	591
Messaure (Lule älv).....	452
Porjus (Lule älv).....	440
Letsi (Lule älv).....	440
Ligga (Lule älv).....	343
Vietas (Lule älv).....	325
Ritsem (Lule älv).....	320
Trängslet (Dalälven).....	300
Porsi (Lule älv).....	275
Kilforsen (Ångermanälven).....	275

Nuclear power plants, net capacity (MW)

Ringhals.....	3,138
Forsmark.....	2,311
Oskarshamn.....	3,702
Barsebäck.....	0

Largest other thermal power plants, net capacity (MW)

Karlskrona (condensing, oil).....	990
Västerås (CHP, condensing, biomass/coal/oil).....	566
Öresundskraft (CHP, natural gas incl. gas turbine).....	566
Värtan, Stockholm (CHP, coal/oil incl. gas turbines).....	396
Ryaverket, Göteborg (CHP, natural gas).....	260
Stenungsund (condensing, oil).....	260
Halmstad (gas turbines).....	250
Brävdala (CHP, condensing, oil).....	240
Lahall (gas turbines).....	240

Hydropower production

River	Normal year GWh	Water flows* m ³ /s	Regulation level
Lule älv.....	13,800	505	67%
Skellefte älv.....	4,300	158	60%
Ume älv.....	7,500	440	26%
Ume älv, excl. Vindälven.....		237	48%
Gide älv.....	300	35	16%
Ångermanälven.....	11,400	490	39%
Indalsälven.....	9,600	444	39%
Ljusn.....	2,300	138	27%
Ljusn.....	3,700	233	21%
Dalälven.....	4,300	342	23%
Lagan.....	500	70	20%
Klarälven.....	1,600	165	20%
Göta älv.....	1,500	536	35%

* Mean flow at mouth of river.

Largest storage reservoirs, capacity (million m³)

Vänern (Göta älv).....	9,400
Suorva (Lule älv).....	6,000
Tjaktajaur (Lule älv).....	1,675
Storsjön (Indalsälven).....	1,250
Satsjaur (Lule älv).....	1,240
Torrön (Indalsälven).....	1,180
Storuman (Ume älv).....	1,100
Trängslet (Dalälven).....	880
Gardiken (Ume älv).....	875
Storavan-Uddjaur (Skellefte älv).....	780
Hornavan (Skellefte älv).....	750
Rebnisjaur (Skellefte älv).....	740